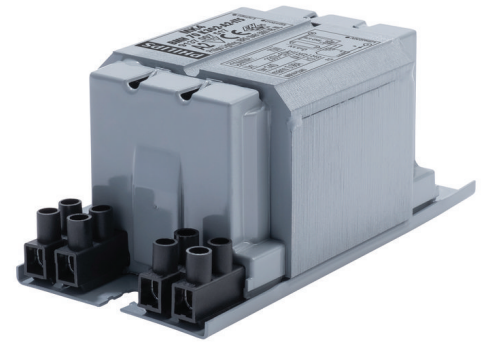


PHILIPS

Lighting



HID-Basic BSN/BMH semi-parallel for SON/CDO/CDM/MH/HPI

BMH 70 K302-A2-ITS 230V 50Hz

Impregnated electromagnetic copper ballasts for use with an external semi-parallel ignitor for CDM, CDO, MH, HPI (Plus) and SON lamps

Product data

General Information		Connector Type	Screw
Application Code	K302-A2-ITS	System characteristics	
Design	BC1-118	Capacitor	12 μ F/250V
Lamp Type	MH	Rated Ballast-Lamp Power	70 W
Number of Lamps	1 piece/unit	Recommended Ignitor	for SON/CDO/CDM lamps ignitor SKD 578 (913700655366) or series digital SUD40 (913700193591)
Operating and Electrical		Temperature	
Input Voltage	230 V	T-Storage (Max)	130 °C
Input Frequency	50 Hz	T-Storage (Min)	-30 °C
Power Factor 100% Load (Nom)	0.85	T-Winding (Max)	140 °C
Mains Voltage Performance (AC)	-8%+6%	Delta-T Normal Conditions	55 °C
Mains Voltage Safety (AC)	-10%+10%	Approval and Application	
Input Current with PF Correction	0.45 A	Active Temperature Protection	Yes
Input Current without PF Correction	0.98 A	Approval Marks	CE marking ENEC certificate
Power Factor without PF Compensation (Nom)	0.35		
Power Losses (Nom)	11.7 W		
Wiring			
Wire Striplength	6.0 mm		
Ballast Contact Wire Cross Section	2.5 mm ²		

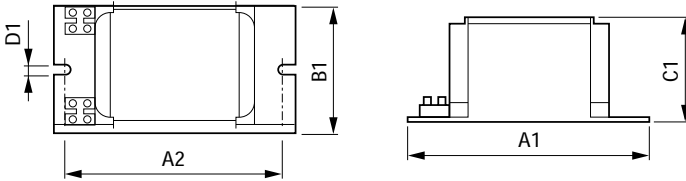
HID-Basic BSN/BMH semi-parallel for SON/CDO/CDM/MH/HPI

Product Data

Full product code	871869674074300
Order product name	BMH 70 K302-A2-ITS 230V 50Hz
EAN/UPC - Product	8718696740743
Order code	913700751726
Numerator - Quantity Per Pack	1

Numerator - Packs per outer box	6
Material Nr. (12NC)	913700751726
Net Weight (Piece)	1.260 kg

Dimensional drawing



Product	A1	A2	B1	C1	D1
BMH 70 K302-A2-ITS 230V 50Hz	118 mm	94 mm	61 mm	52 mm	6.2 mm

BMH 70 K302-A2-ITS 230V 50Hz

